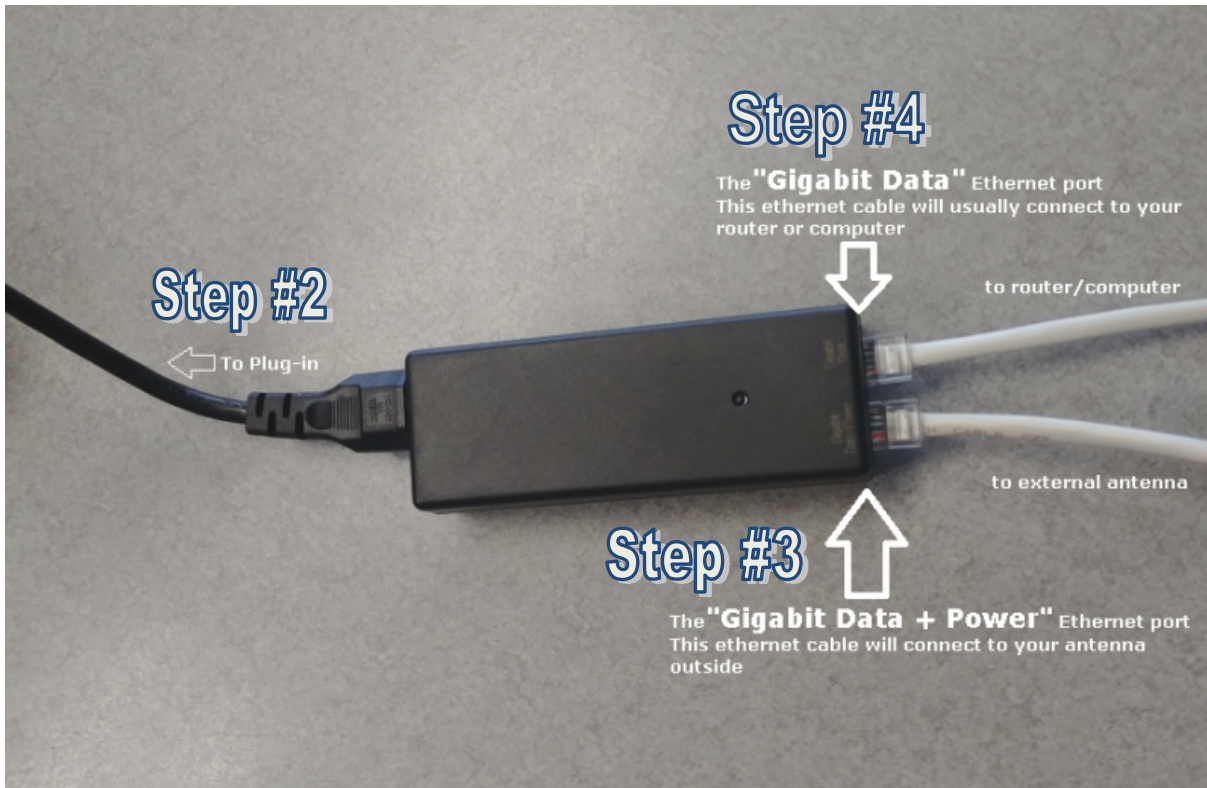


WIRELESS ANTENNA POWER SUPPLY REPLACEMENT

Step 1: Unplug and remove the old power supply

Step 2: Plug in the new Power Supply to the Power Outlet



Step 3: Plug in the Ethernet cable that comes in from the outside antenna into the "Gigabit Data + Power" Ethernet port

Step 4: Plug in an Ethernet cable from the "Gigabit Data" Ethernet port into your device needing Internet (usually will be either your Router or possibly directly to your computer)